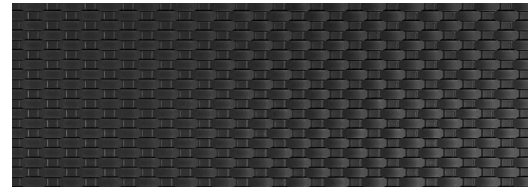




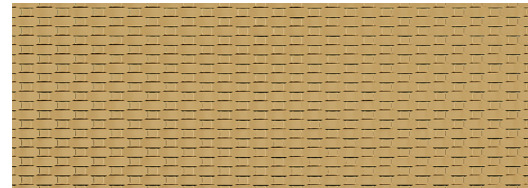
INSTALLATION PHOTO
The Venue – Zanzibar – Gloss – DSBUA039



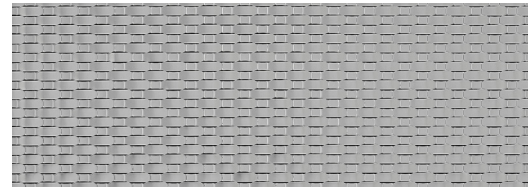
DSBUA043
MATTE



DSBUA009
MATTE



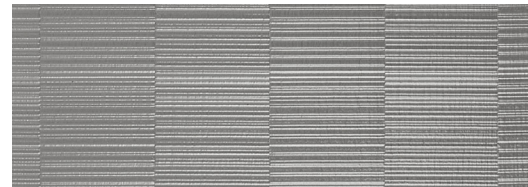
DSBUA041
GLOSS



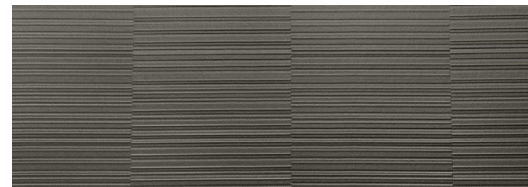
DSBUA039
GLOSS



DSBUA037
SEMI-GLOSS



DSBUA035
SEMI-GLOSS



DSBUA033
SEMI-GLOSS

THE VENUE – ZANZIBAR

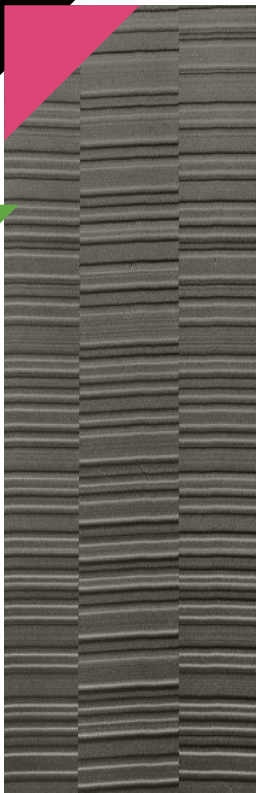
Building onto the Venue grouping is **Zanzibar** – graphically bold, three dimensional patterns with movement infusing an elevated aesthetic of a fierce loungy environment. In three finish options: Gloss, Semi-Gloss, and Matte + a choice of Dry Back or Self-adhesive backings, these High Impact Polystyrene, 100% PVC-free panels are bursting with an optical intensity that conveys inspired design.

SPECIFICATIONS

SIZE	102.4" x 39.37" nominal standard (2600mm x 1000mm)
THICKNESS	Gloss and Matte: Dry Back: 2.4mm (.094"); Self-Adhesive: 2.64mm (.104"); Semi-Gloss: Dry Back: 1.2mm (.047"); Self-Adhesive: 1.33mm (.052")
BACKING	Dry Back, Self-Adhesive
FINISH	Gloss, Semi-Gloss, or Matte (as noted)
CONSTRUCTION	High Impact Polystyrene (HIPS)
APPLICATION	Walls, Furniture, Display Elements
ASI® ADVANTAGE	100% PVC-free

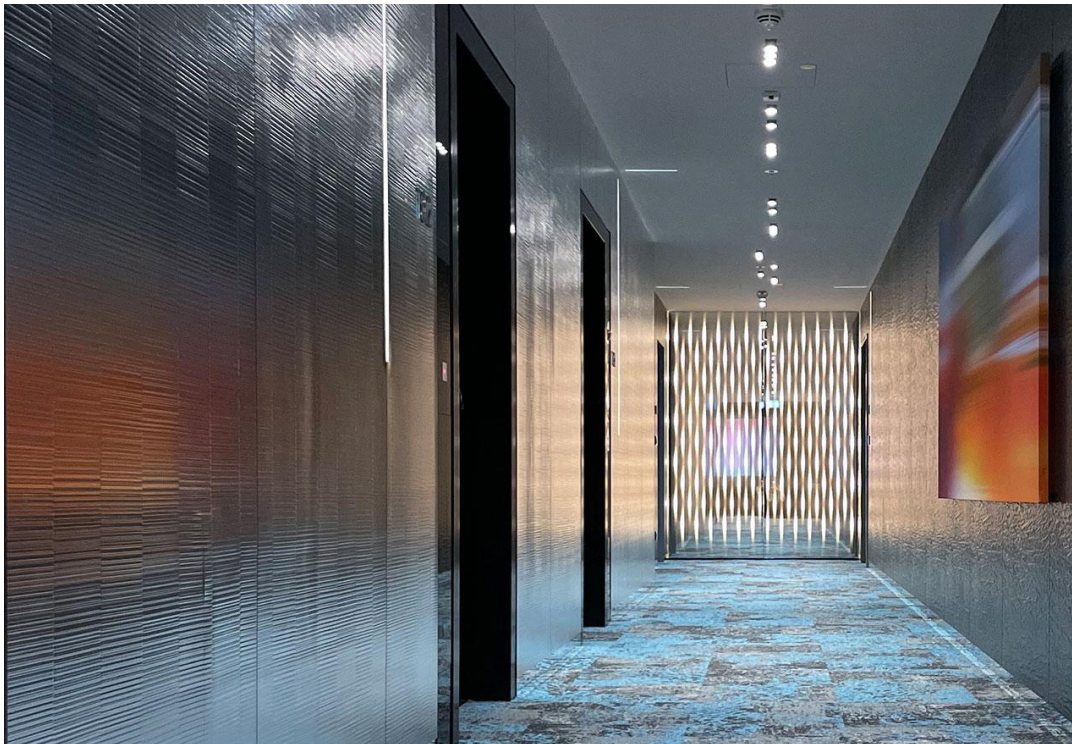
* Spec ID#’s are listed for Dry-Back

* Please note that variations in color and texture may occur due to the nature of the material



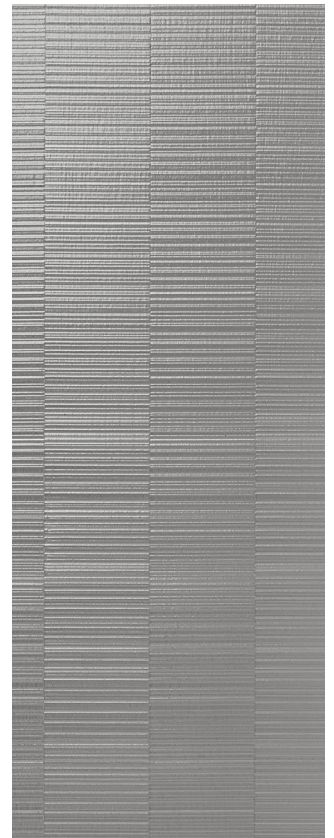
INSTALLATION PHOTO

The Venue – Zanzibar – Semi-Gloss – DSBUA033



INSTALLATION PHOTO

The Venue – Zanzibar – Semi-Gloss – DSBUA035



APPLICATIONS

- The Venue - Zanzibar can be used anywhere you would use plastic laminates, vinyl wall coverings, wallpaper or wood surfacing panels.
- Specific applications:
 - o Vertical wall treatments
 - o Elevator interiors
 - o Furniture i.e. headboards
 - o Store fixtures
 - o Shelves
 - o Doors
 - o Ceiling tiles
 - o Cabinet faces and doors

IMPORTANT

- Direct contact with water is to be avoided!

INSTALLATION

Material can be installed by a qualified wall covering contractor or carpenter when being applied to millwork.

Material should be laid flat for 24 hours prior to installation.

ACCLIMATIZATION

- Material should be acclimatized in the space for 24 hours prior to installation.
- Ideal working temperature in the space for installation should be between 50°F and 86°F.

In a temperature-controlled environment, this collection is dimensionally stable. However, a temperature fluctuation of 50°F will cause expansion/contraction of approximately 1/32" over a length of 39".

WHAT DOES THIS MEAN?

This means that the collection should be installed only when the building's environmental systems are operating. Or they are going into a space where temperature fluctuation is not an issue.

If the temperature fluctuates over that range (50°F), you will see either gapping or buckling at the seams where the material butts. To compensate in installations where this may occur, the vertical surface behind the material can be painted to match the base color of the product and a 2mm gap can be left between panels.

An example of the type of installation that can be problematic are lobbies with high atriums and sky lights. Cooled air will sink while the upper levels of the atrium can be very hot.

THIS COLLECTION CAN BE ORDERED, PREPARED FOR INSTALLATION WITH:

- Self-adhesive pressure sensitive back, unbacked, or prepared for PVA glue.*

Adhesives:

- Water based contact adhesives are an acceptable means to apply the ASI product to a substrate.
- All adhesives should be tested for compatibility prior to application.

*Sheets that are to be used with PVA adhesives go through an additional manufacturing process and must be processed within 6 months of the manufacturing date. The sheets are delivered with a label on the back that notes that they have been prepared for PVA adhesive and the date of manufacture.

The advantage of using a press with PVA glue will be no expansion and contraction of the material. This will allow the builder to attain a flush edge application of the material. This is especially important if an edge trim is going to be applied.

Typically, you would see this type of application on doors, drawer fronts, cabinetry and furniture as well as store fixtures and displays.

PROCESSING:

Apply adhesive all over to the whole prepared and cleaned surface using a fine trowel with A1 teeth or a medium trowel with A2 teeth, depending on relief of the pattern, and press on firmly. At processing temperatures of 65°F - 86°F, the adhesive should then be left to air dry for approx. 15 minutes.

Finger test: After application with the trowel, the minimum drying time is reached when the adhesive no longer sticks to the fingers.

- The bond is resistant to humidity; contact with water should be avoided.
- Clean tools immediately after use with water.
- Protect unused adhesive from frost.
- Use in a well-ventilated area.

THIS COLLECTION CAN BE INSTALLED ON BOTH POROUS AND NON-POROUS SURFACES

Porous surfaces can include:

- Chip board
- MDF
- Gypsum
- Sheetrock
- Masonry

When the ASI product is being applied to a porous substrate, the substrate should be sealed prior to installation with a water-based contact adhesive.

Non-porous surfaces include:

- lacquered surfaces
- plastic laminate
- melamine
- viny

SURFACE/APPLICATION

- Must be dry, smooth, free of loose material, dust and dirt, grease, wax and silicon.
- In order to achieve maximum adhesion, non-absorbent surfaces should be cleaned with alcohol (ethanol, isopropyl alcohol).
- Adhesive sheets are suitable for both absorbent and non-absorbent surfaces, although nonabsorbent surfaces are recommended.
- In the case of porous or highly absorbent surfaces, e.g. brickwork, we recommend our dispersion adhesive as a suitable first coat.
- Where the surface is concave or convex, all sheet edges must be anchored mechanically using profiles.

CUTTING, DRILLING, PUNCHING, SAWING

Cutting must always take place starting from the upper/patterned surface.

BONDING

- **Patterned sheets delivered in rolled form must be kept flat for a minimum of 24 hours. Weighing down improves evenness.**
- The ideal working temperature is between 50°F to 86°F.
- The patterned sheets must be acclimatized, i.e. they must be brought up to room temperature prior to processing (avoidance of condensation on the adhesive surface).
- A temperature increase of 50°F will cause the ASI product to expand by approximately 1/32" over a length of 39" (0.7mm over a length of 1.0m).
- Expansion and contraction of the material should be taken into consideration when temperature and humidity are not maintained at a constant level.

- **As a rule, an approximate 2-3mm expansion joint is to be left along the sheet edges!**
- In the case of high ambient temperatures or major temperature fluctuations, the expansion gap should be increased.
- Air bubbles must be avoided; use a medium-hard rubber roller with a width of approximately 170mm.
- Gradually remove the adhesive backing cover and press as firmly as possible onto the underlying surface. Do not touch the adhesive surface.
- **WARNING:** Do not employ adhesives containing solvents as these can dissolve the backing material!

SURFACE PROTECTION

The upper sheet surface is safeguarded against damage by a protective film, which is removed after processing.



NOTE:

- Never employ abrasives, cleaning agents containing solvents, or pure alcohol for the cleaning of this ASI product.

FOR LIGHT DIRT SITUATIONS:

- Use a soft cleaning cloth that is dust and dirt-free.

FOR HEAVIER DIRT SITUATIONS:

- Use a standard plastic or glass cleaning agent. Do not spray the cleaner directly onto the material surface, but sparingly onto a soft cloth.

LIMITED WARRANTY

PLEASE READ BEFORE THE INSTALLATION

Architectural Systems issues a warranty of two years from invoice date to this product if the following requirements are fulfilled:

- compliance with the application instructions
- indoor application
- no direct contact with water

Please also note the following types of exclusions from the warranty:

- Direct sunlight can slightly change the color of dark surfaces after some time.
- Mechanical load instances such as scratches, pressure marks, etc.
- Variations in color and texture may occur due to the nature of the material.

For further information, please contact sales@archsystems.com.