

Tempur-Pedic, Multiple Locations, dash design  
The Venue – Royalton – Dry Back – DSBUA064



**DSBUA064**



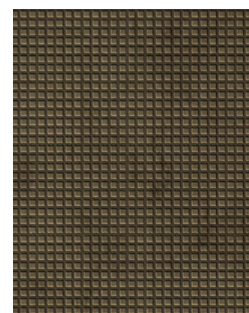
**DSBUA078**



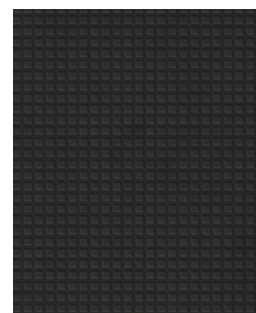
**DSBUA074**



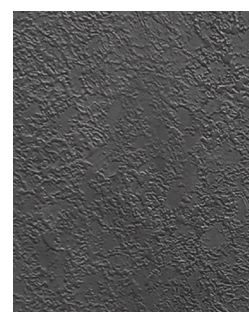
**DSBUA082**



**DSBUA076**



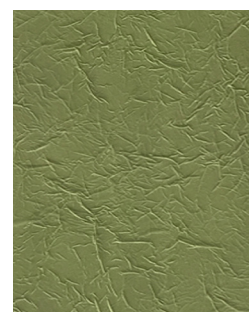
**DSBUA066**



**DSBUA070**



**DSBUA072**



**DSBUA080**



**DSBUA068**

## THE VENUE – ROYALTON

**Royalton** reflects the art of curation as shown in 10 spectacular velvet inspired, vibrant-colored wall surfacing selections. The array of options allows for a dimensional and stable install for these lightweight panels that inform a magical and sophisticated vibe throughout.

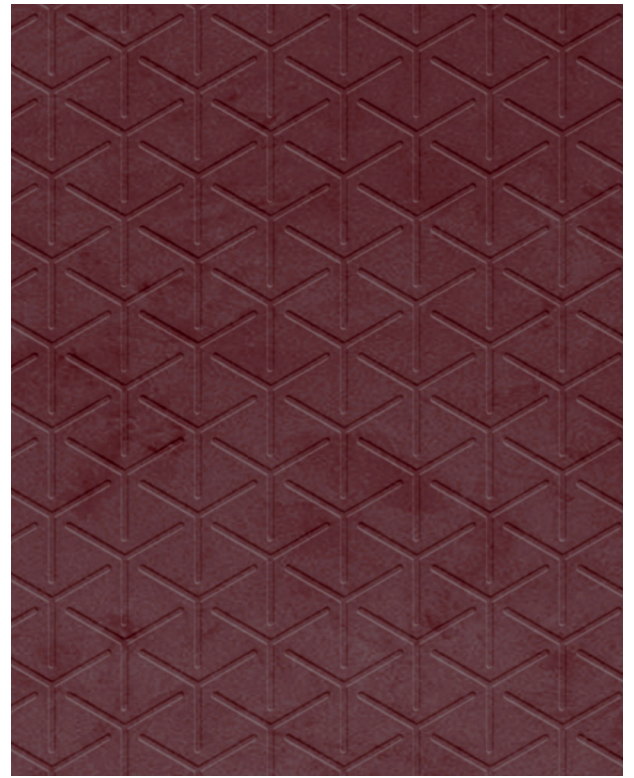
## SPECIFICATIONS

<b>SIZE</b>	102.4" x 39.37" nominal standard (2600mm x 1000mm)
<b>THICKNESS</b>	<b>Dry Back:</b> 2.2mm (.087"); <b>Self-Adhesive:</b> 2.33mm (.092")
<b>BACKING</b>	Dry Back, Self-Adhesive
<b>FINISH</b>	Matte
<b>CONSTRUCTION</b>	PET fiber adhered to HighImpact Polystyrene (HIPS)
<b>APPLICATION</b>	Walls, Furniture, Display Elements
<b>ASI® ADVANTAGE</b>	100% PVC-free; Minimums apply

\* Spec ID#’s are listed for Dry-Back

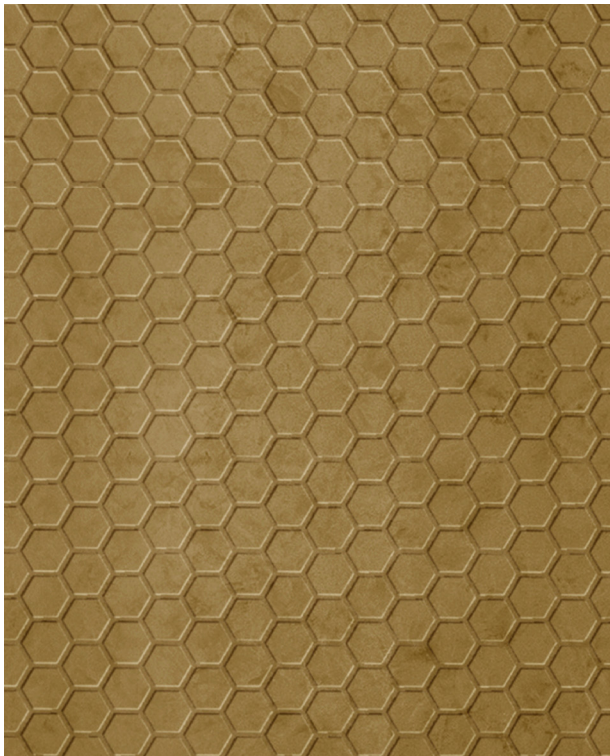
\* Please note that variations in color and texture may occur due to the nature of the material





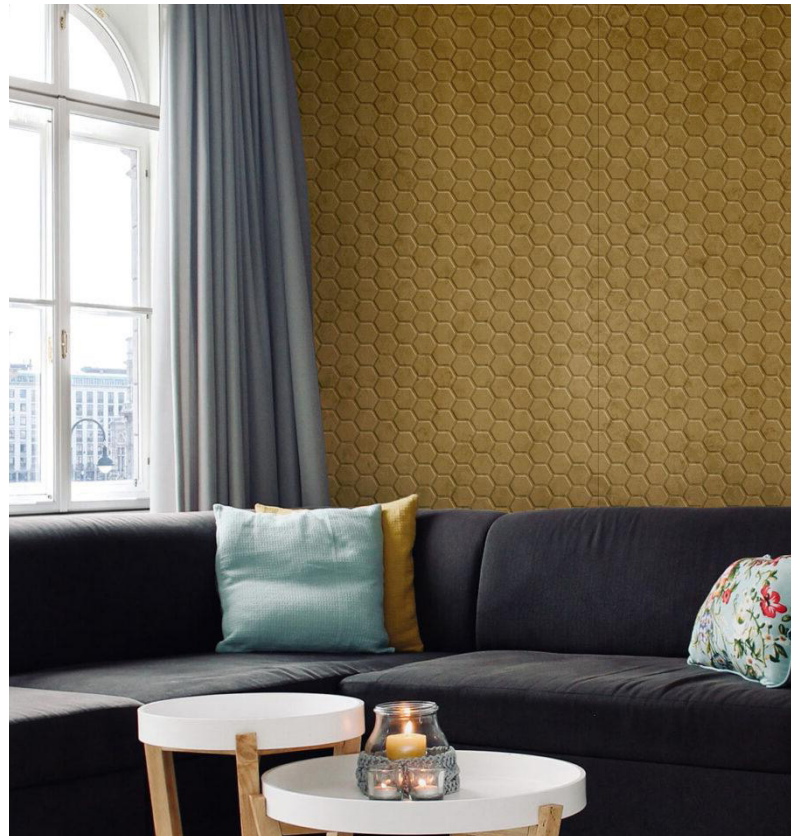
### INSTALLATION PHOTO

The Venue – Royalton – Dry Back – DSBUA074



### INSTALLATION PHOTO

The Venue – Royalton – Dry Back – DSBUA078





## TECHNICAL DATA



PLEASE CONTACT [SALES@ARCHSYSTEMS.COM](mailto:SALES@ARCHSYSTEMS.COM).

## APPLICATIONS

- The Venue - Royalton can be used anywhere you would use plastic laminates, vinyl wall coverings, wallpaper or wood surfacing panels
- This collection is available in our new **AntiGrav** backing! Please refer to the **AntiGrav Panels** page in this document for additional details.
- Specific applications:
  - o Vertical wall treatments
  - o Elevator interiors
  - o Furniture i.e. headboards
  - o Store fixtures
  - o Shelves
  - o Doors
  - o Ceiling tiles
  - o Cabinet faces and doors

## NOTE

- Direct contact with water is to be avoided.

## INSTALLATION

Material can be installed by a qualified wall covering contractor or carpenter when being applied to millwork.

Material should be laid flat for 24 hours prior to installation.

## ACCLIMATIZATION

- Material should be acclimatized in the space for 24 hours prior to installation.
- Ideal working temperature in the space for installation should be between 50°F and 86°F.

In a temperature-controlled environment, the The Venue - Royalton is a dimensionally stable product.

However, a temperature fluctuation of 50°F will cause expansion/contraction of approximately 1/32" over a length of 39".

## WHAT DOES THIS MEAN?

This means that The Venue - Royalton should be installed only when the building's environmental systems are operating. Or they are going into a space where temperature fluctuation is not an issue.

If the temperature fluctuates over that range (50°F), you will see either gapping or buckling at the seams where the material butts. To compensate in installations where this may occur, the vertical surface behind the material can be painted to match the base color of the The Venue - Royalton and a 2mm gap can be left between panels.

An example of the type of installation that can be problematic are lobbies with high atriums and sky lights. Cooled air will sink while the upper levels of the atrium can be very hot.

## THE VENUE - ROYALTON CAN BE ORDERED, PREPARED FOR INSTALLATION WITH:

- Self-adhesive pressure sensitive back, unbacked, or prepared for PVA glue\*.

### Adhesives:

- Water based contact adhesives are an acceptable means to apply the ASI product to a substrate.
- All adhesives should be tested for compatibility prior to application.

\*Sheets that are to be used with PVA adhesives go through an additional manufacturing process and must be processed within 6 months of the



manufacturing date. The sheets are delivered with a label on the back that notes that they have been prepared for PVA adhesive and the date of manufacture.

The advantage of using a press with PVA glue will be no expansion and contraction of the material. This will allow the builder to attain a flush edge application of the material. This is especially important if an edge trim is going to be applied.

Typically, you would see this type of application on doors, drawer fronts, cabinetry and furniture as well as store fixtures and displays.

## PROCESSING:

Apply adhesive all over to the whole prepared and cleaned surface using a fine trowel with A1 teeth or a medium trowel with A2 teeth, depending on relief of the pattern, and press on firmly. At processing temperatures of 65°F - 86°F, the adhesive should then be left to air dry for approx. 15 minutes.

**Finger test:** After application with the trowel, the minimum drying time is reached when the adhesive no longer sticks to the fingers.

- The bond is resistant to humidity; contact with water should be avoided.
- Clean tools immediately after use with water.
- Protect unused adhesive from frost.
- Use in a well-ventilated area.

## THE VENUE - ROYALTON CAN BE INSTALLED ON BOTH POROUS AND NON-POROUS SURFACES

### ***Porous surfaces can include:***

- Chip board
- MDF
- Gypsum
- Sheetrock
- Masonry

When The Venue - Royalton is being applied to a porous substrate, the substrate should be sealed prior to installation with a water-based contact adhesive.

### ***Non-porous surfaces include:***

- lacquered surfaces
- plastic laminate
- melamine
- vinyl

## SURFACE/APPLICATION

- Must be dry, smooth, free of loose material, dust and dirt, grease, wax and silicon.
- In order to achieve maximum adhesion, non-absorbent surfaces should be cleaned with alcohol (ethanol, isopropyl alcohol).
- Adhesive sheets are suitable for both absorbent and non-absorbent surfaces, although nonabsorbent surfaces are recommended.
- In the case of porous or highly absorbent surfaces, e.g. brickwork, we recommend our dispersion adhesive as a suitable first coat.
- Where the surface is concave or convex, all sheet edges must be anchored mechanically using profiles.

## CUTTING, DRILLING, PUNCHING, SAWING

Cutting must always take place starting from the upper/patterned surface.

## BONDING

- **Patterned sheets delivered in rolled form must be kept flat for a minimum of 24 hours. Weighing down improves evenness.**
- The ideal working temperature is between 50°F to 86°F.
- The patterned sheets must be acclimatized, i.e. they must be brought up to room temperature prior to processing (avoidance of condensation on the adhesive surface).
- A temperature increase of 50°F will cause our products to expand by approximately 1/32" over a length of 39" (0.7mm over a length of 1.0m).
- Expansion and contraction of the material should be taken into consideration when temperature and humidity are not maintained at a constant level.

- **As a rule, an approximate 2-3mm expansion joint is to be left along the sheet edges!**
- In the case of high ambient temperatures or major temperature fluctuations, the expansion gap should be increased.
- Air bubbles must be avoided; use a medium-hard rubber roller with a width of approximately 170mm.
- Gradually remove the adhesive backing cover and press as firmly as possible onto the underlying surface. Do not touch the adhesive surface.
- **WARNING:** Do not employ adhesives containing solvents as these can dissolve the backing material!

## SURFACE PROTECTION

The upper sheet surface is safeguarded against damage by a protective film, which is removed after processing.

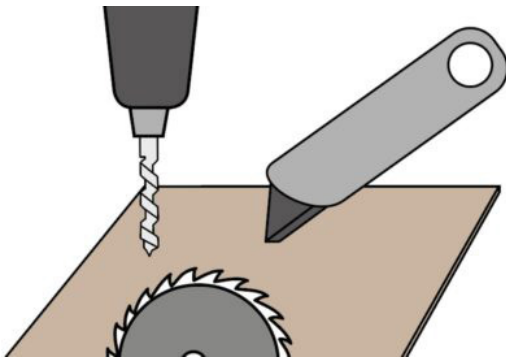
## OUR NEW ANTIGRAV BACKING OFFER EXCITING ADVANTAGES:

- Expansion-joint-free bonding (edge-to-edge bonding) for seamless wall design
- Lightweight, dimensionally stable and compact panels ensure ease of handling
- Ease of processing with commercially available cutting tools
- Easy readjustment by bonding with silicone or MS polymer hybrid adhesive on all substrates

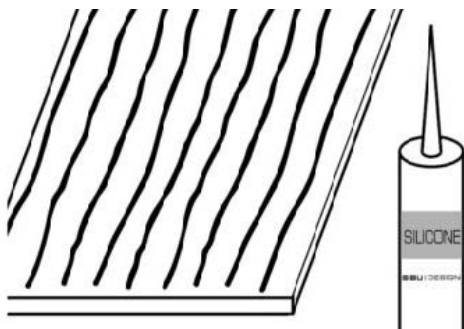
### PROCESSING ANTIGRAV PRODUCTS

- AntiGrav panels can be bonded edge-to-edge and thus does not require expansion joints.
- Readjustment is no issue when bonding with standard neutral silicone or hybrid polymer adhesives!
- AntiGrav panels can be cut to size by using standard, commercially available cutting tools.

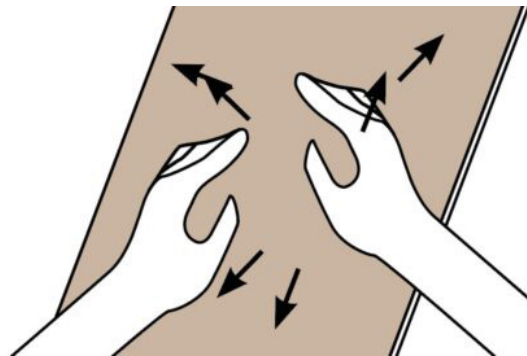
**STEP 1:** Always complete processing on the decorative side.



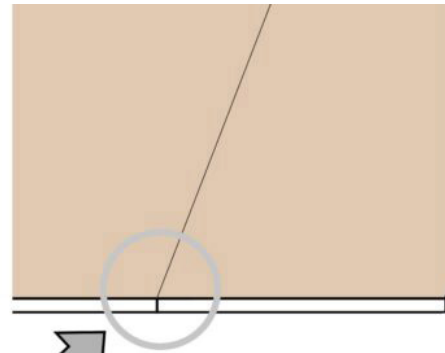
**STEP 2:** Apply silicone beads vertically 0.4" (1 cm) from the edge and with a distance of 2.4" (6 cm) between each silicone bead.



**STEP 3:** Fix the plate on the wall and adapt.



**NOTE:** Edge-to-edge bonding means no expansion joint is needed!





## LIGHT, GENERAL CLEANING:

- Gently vacuum the surface or use a microfiber cloth to clean the surface.

## CLEANING STAINS:

- Stains caused by oil, greases and ink must be removed immediately.
- Do not use abrasive cleaners, solvent cleaners or pure alcohol!
- Dab the stain with an absorbent cloth. Apply soapy water to a clean cloth (do not spray soapy water directly onto the ASI product), then wipe stain away with mild soapy water.



# LIMITED WARRANTY

## PLEASE READ BEFORE THE INSTALLATION

Architectural Systems issues a warranty of 2 years from invoice date to this product if the following requirements are fulfilled:

- compliance with the application instructions
- indoor application
- no direct contact with water

### NOTE:

- Direct sun light can slightly change the color of dark surfaces after some time.
- Mechanical load such as scratches, pressure marks, etc. are excluded.
- Please note that variations in color and texture may occur due to the nature of the material.

For further information, please contact [sales@archsystems.com](mailto:sales@archsystems.com).