



SPARTAN SURFACES SHOWROOM, Washington DC, MD
Flexion Wall Panels – Valley – Walnut – WPVEP589



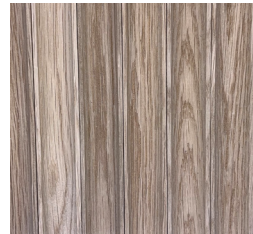
WPVEP586
WALNUT – ROUNDED



WPVEP589
WALNUT – VALLEY



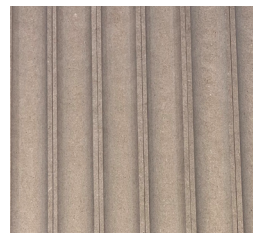
WPVEP585
WHITE OAK – ROUNDED



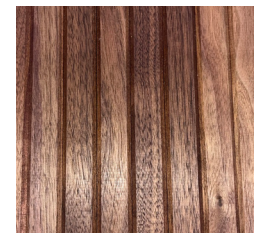
WPVEP588
WHITE OAK – VALLEY



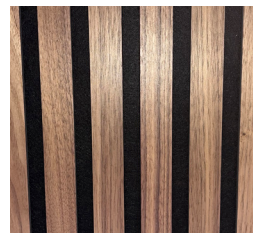
WPVEP587
PAINTABLE MDF – ROUNDED



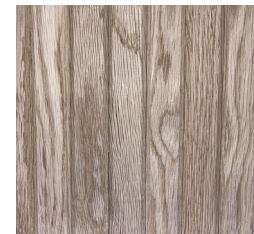
WPVEP590
PAINTABLE MDF – VALLEY



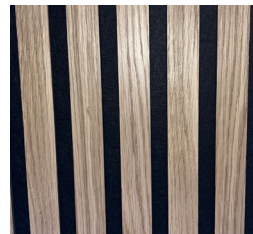
WPVEP583
WALNUT – CHORD



WPVEP580
WALNUT – ACOUSTIFLEX



WPVEP582
WHITE OAK – CHORD



WPVEP579
WHITE OAK – ACOUSTIFLEX



WPVEP584
PAINTABLE MDF – CHORD

FLEXION WALL PANELS

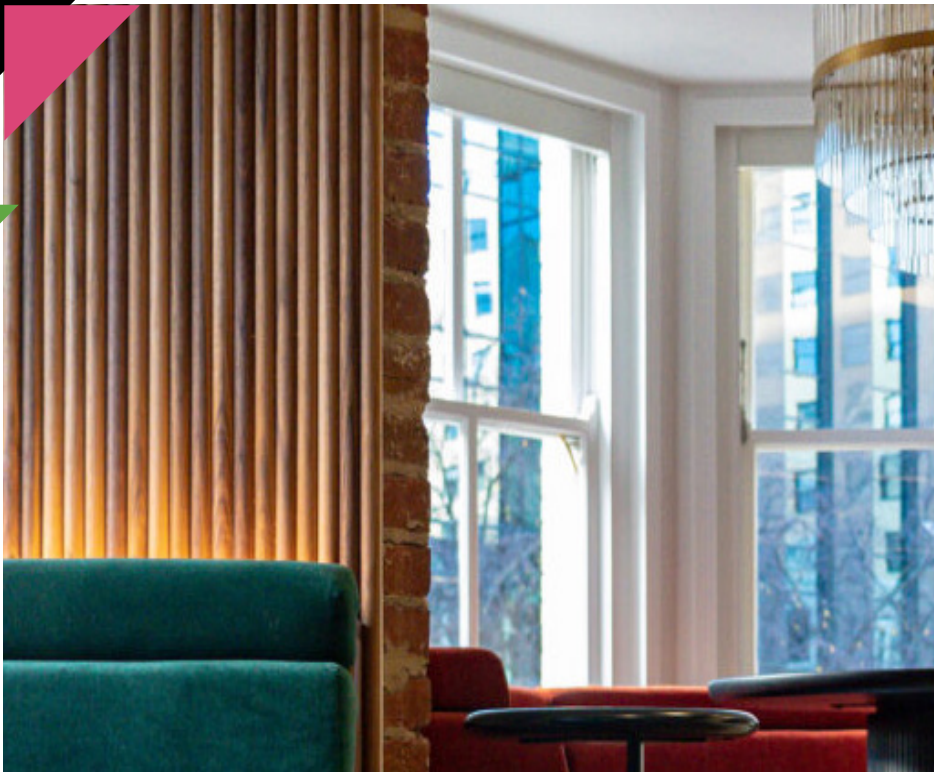
Flexion Wall Panels communicate a timeless yet transitional interpretation of tambour wood, incorporating an acoustical and non-acoustical 12"x8' option. **Acoustiflex** is a flexible wall panel with linear slats available in White Oak or Walnut veneer, and **Rounded, Valley** and **Chord** comprise the three additional non-acoustical styles in White Oak, Walnut and Paintable MDF offerings. This iconic surfacing material provides an effective sound absorbing and engaging choice for any venue.

SPECIFICATIONS

SIZE	12.25" x 8'
THICKNESS	Rounded and Valley: 0.45" – 0.48"; Chord: 0.35"; Acoustiflex: 0.5"
SPECIES	White Oak or Walnut; Paintable MDF option available for Chord, Rounded and Valley only
INSTALLATION	Glue and Finishing Nails (with Peel and Stick sections to hold slats in place)
APPLICATION	Headboards, Walls, Architectural Millwork, Furniture and Fixture Components, Doors. Interior use only.

* In Stock products are subject to availability.

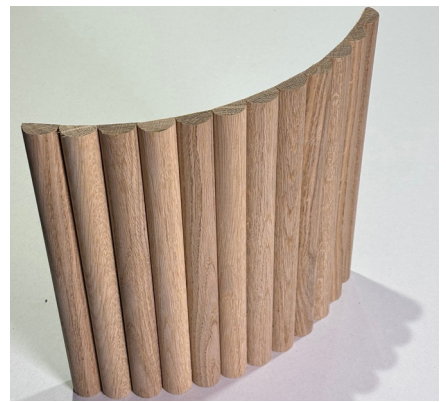
* Please note that variations in color and texture may occur due to the nature of the material



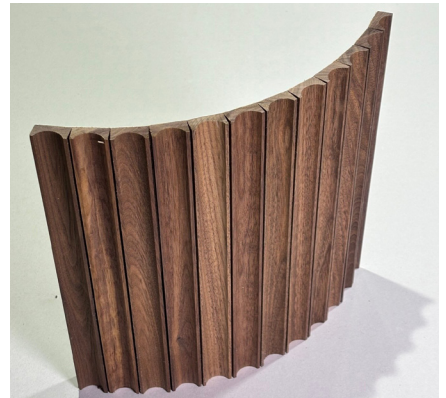
SPARTAN SURFACES SHOWROOM

Washington DC, MD

Flexion Wall Panels – Rounded – Walnut – WPVEP586



ROUNDED – White Oak



VALLEY – Walnut



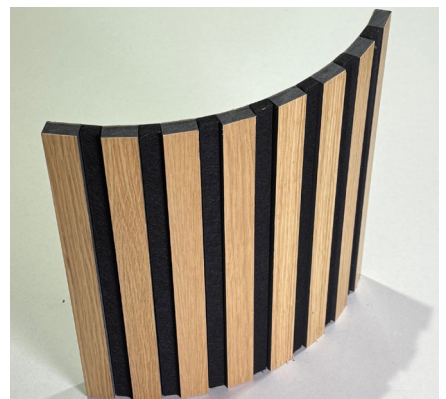
SPARTAN SURFACES SHOWROOM

Washington DC, MD

Flexion Wall Panels – Rounded – Walnut – WPVEP586

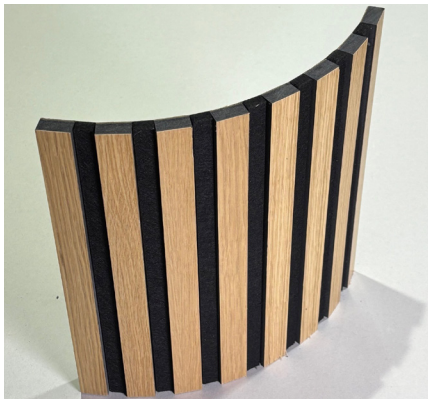


CHORD – Walnut

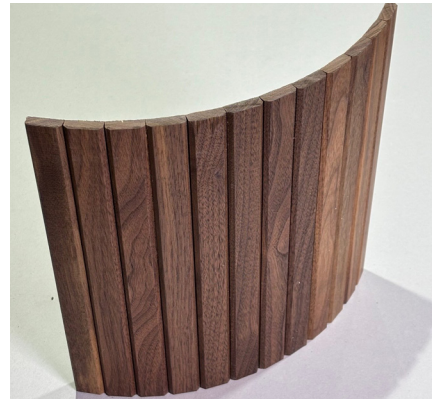


ACOUSTIFLEX – White Oak

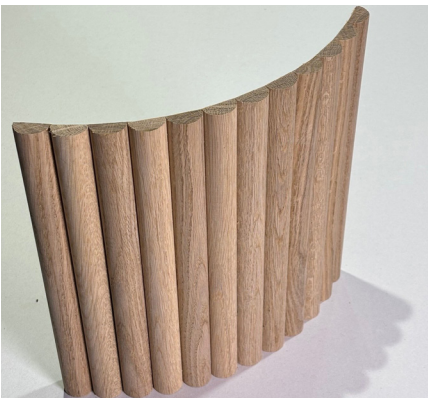
- **Acoustiflex** is available in Walnut and White Oak.
- **Chord**, **Rounded** and **Valley** SKUs are available in Walnut, White Oak and a paintable MDF option.



ACOUSTIFLEX



CHORD



ROUNDED



VALLEY

ASI | Architectural Systems, Inc. guarantees the conformity of its products when they are installed according to the installation instructions and are maintained in an environment where ambient humidity ranges between 35% and 55%: before, during and after installation. **LEAVE THE BOX IN THE ROOM WHERE IT IS TO BE INSTALLED FLAT ON THE FLOOR IN ITS ORIGINAL PACKAGING UNTIL INSTALLATION.**

PRECAUTIONS: Always wear work gloves and safety glasses when installing the product.

TOOLS:

- Vertical adhesive through ASI
 - Spec ID# FLDT025
- Caulking gun
- Miter saw
- Tablesaw
- Level
- Measuring tape
- Cutter
- Pneumatic finish hammer (#23 gauge finish nail)
- Stepladder

MAKE SURE YOUR KNIVES AND SAW-BLADES ARE IN PRIME CONDITION.

First, using a level, leave a 1/8" gap and draw a line on the left against the wall where the first wall panel will be installed.

STEP 1:

Cut the wall panel to the required length, if necessary, using a miter saw.

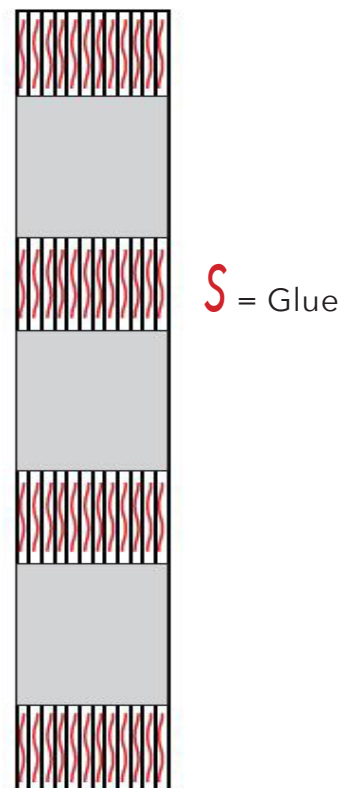
STEP 2:

Apply construction glue on the back of the wall panel on every wood slat without the double-faced tape. See diagram to the right.

Ceiling Applications Note:

Special glues must be specified by the onsite engineer or architect with the use of #18 gauge nails and installed by a licensed contractor or carpenter.

Structural weight limitations need to be considered. Ceiling applications are not covered by the warranty.



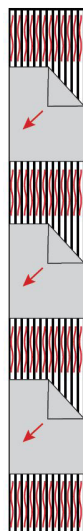
The wall panel needs to be glued and nailed for a successful install and to prevent future warping. Failure to comply with the installation instructions shall void the application of the warranty. This is a glue and nail installation. Do not install over material other than drywall and plywood.

STEP 3:

Remove the protective film from the double-faced tape.

The double-faced tape serves to hold the wall panel in place during the installation process.

It is not intended to provide long-term support or act as a permanent bonding method for the installation.



STEP 4:

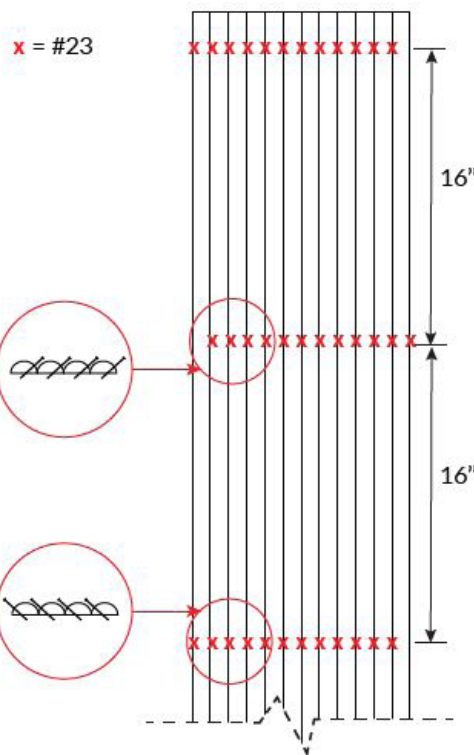
Start by aligning the first panel along the leveled line that you marked earlier. This line serves as your guide for the entire installation, ensuring the panels are level and evenly spaced. Gently press the wood slat on the left side of the panel into place and roll the panel into position, being mindful to keep it aligned straight as you do so.



Once positioned on the wall, the panel will not be movable.

STEP 5:

Nail each slat at an angle every 16 inches, using #23 gauge nails, alternating sides with each placement.



STEP 6: INSTALLATION OF SUBSEQUENT PANELS

Repeat Steps 1-3, align against the installed wall panel and gently roll into place. Repeat Step 5.

MAINTENANCE

Clean-up recommendations: a regular dusting with a soft cloth or a feather duster.

The wall panel needs to be glued and nailed for a successful install and to prevent future warping. Failure to comply with the installation instructions shall void the application of the warranty. This is a glue and nail installation. Do not install over material other than drywall and plywood.

LIMITED WARRANTY

CHORD, ROUNDED AND VALLEY SKUS ONLY



PLEASE READ BEFORE THE INSTALLATION

Environmental conditions such as exposure to light and fluctuation in temperature and humidity, will greatly affect product performance from the initial installation throughout its life. Refer to our installation instructions and warranty for proper steps to a successful install and ensure the lifelong performance of your Architectural Systems, Inc. wall. Failure to follow the installation instructions shall void this warranty.

Architectural Systems, Inc. guarantees the conformity of its products when they are installed according to the installation instructions and are maintained in an environment where ambient humidity ranges from 35% to 55% before, during and after the installation.

Solid wood and wood veneer are susceptible to show movement when ambient humidity level is below 35% or above 55% such as gapping between pieces and possible cupping.

Architectural Systems, Inc. can not be held responsible for site conditions and products that are not installed per our instructions.

Architectural Systems, Inc. guarantees the wall panels against manufacturing defects. If, upon opening a box a panel is defective or fails to meet quality standard, the consumer may return the panel to the original dealer for a replacement.

This product is flammable and its use near an important heating source is not recommended. Please check the latest construction regulations in your area. In addition, the wood will lose its humidity which can cause delamination.

Storage: Do not store in a garage, basement, or other locations where the wood would be exposed to the effects of uncontrolled humidity and environment conditions.

5 - Year Limited Structural Warranty

Architectural Systems, Inc. guarantees the wall panel, in their original condition, shall be free from manufacturing defects for the period of 5 years from the date of the original purchase.

3 - Year Finish Limited Warranty

Architectural Systems, Inc. guarantees the surface finish on the wall panel under normal conditions won't wear through for the period of 3 years from the date of the original purchase.



LIMITED WARRANTY CONT.

CHORD, ROUNDED AND VALLEY SKUS ONLY



Given the nature of wood, it is possible that the wall panels may vary in colour variations from one panel to the next, from one sample to the next, and from one production lot to the next. We recommend that you lay out the panels on the wall based on your personal colour preferences. Such variations may not be claimed under warranty.

To avoid dramatic variation between pieces, it is recommended that the installation be completed from the same lot.

Ceiling applications are not covered by this warranty.

This warranty does not cover ANY other costs, such as, but not limited to, installation, transport, punitive damages, labor etc.

This warranty does not cover cupping and/or delaminating due to excessive moisture or humidity.

This warranty does not cover damages caused by or related to improper storage or installation of the wall panels.

This warranty does not cover manufacturing defects in the wall panels which have been installed, and which could have been discovered by the installer prior the installation.

By installing this product, you confirm that you have consulted the installation instructions and acknowledge your approval of the product and its warranty.

What Architectural Systems, Inc. Will Do

Architectural Systems, Inc. will repair or replace any defective wall panels or issue credit for the defective portion. However, you are responsible for the costs associated with shipping and handling of replacements, as well as any additional expenses related to the defective panels, including labor for removal and installation, and any extra materials required. Please note that, due to the natural variations in the product, replacements may not match the original order in terms of color, tone, or other inherent wood characteristics.

Should you have any questions or concerns regarding the product, installation, or warranty, please reach out to your sales representative.

LIMITED WARRANTY

ACOUSTIFLEX SKUS ONLY



PLEASE READ BEFORE THE INSTALLATION

Environmental conditions such as exposure to light and fluctuation in temperature and humidity, will greatly affect product performance from the initial installation throughout its life. Refer to our installation instructions and warranty for proper steps to a successful install and ensure the lifelong performance of your Architectural Systems, Inc. wall. Failure to follow the installation instructions shall void this warranty.

Architectural Systems, Inc. guarantees the conformity of its products when they are installed according to Architectural Systems, Inc. installation instructions and are maintained in an environment where ambient humidity ranges from 35% to 55% before, during and after the installation.

Solid wood and wood veneer are susceptible to show movement when ambient humidity level is below 35% or above 55% such as gapping between pieces and possible cupping.

Architectural Systems, Inc. can not be held responsible for site conditions and products that are not installed per our instructions.

Architectural Systems, Inc. guarantees the wall panels against manufacturing defects. If, upon opening a box a panel is defective or fails to meet Architectural Systems, Inc. quality standard, the consumer may return the panel to the original dealer for a replacement.

This product is flammable and its use near an important heating source is not recommended. Please check the latest construction regulations in your area. In addition, the wood will lose its humidity which can cause delamination.

Storage: Do not store in a garage, basement, or other locations where the wood would be exposed to the effects of uncontrolled humidity and environment conditions.

2 - Year Limited Structural Warranty

Architectural Systems, Inc. guarantees the wall panel, in its original condition, shall be free from manufacturing defects for the period of 2 years from the date of the original purchase.

LIMITED WARRANTY CONT.

ACOUSTIFLEX SKUS ONLY



Given the nature of wood, it is possible that Architectural Systems, Inc. wall panels may vary in colour variations from one panel to the next, from one sample to the next, and from one production lot to the next. We recommend that you lay out the panels on the wall based on your personal colour preferences. Such variations may not be claimed under warranty.

To avoid dramatic variation between pieces, it is recommended that the installation be completed from the same lot.

Ceiling applications are not covered by this warranty.

This warranty does not cover ANY other costs, such as, but not limited to, installation, transport, punitive damages, labor etc.

This warranty does not cover cupping and/or delaminating due to excessive moisture or humidity.

This warranty does not cover damages caused by or related to improper storage or installation of the wall panels.

This warranty does not cover individual wood pieces that may come loose and fall off the substrate during or after the installation due to vibrations during transit.

This warranty does not cover manufacturing defects in the wall panels which have been installed, and which could have been discovered by the installer prior the installation.

By installing this product, you confirm that you have consulted the installation instructions and acknowledge your approval of the product and its warranty.

What Architectural Systems, Inc. Will Do

Architectural Systems, Inc. will repair or replace any defective wall panels or issue credit for the defective portion. However, you are responsible for the costs associated with shipping and handling of replacements, as well as any additional expenses related to the defective panels, including labor for removal and installation, and any extra materials required. Please note that, due to the natural variations in the product, replacements may not match the original order in terms of color, tone, or other inherent wood characteristics.

Should you have any questions or concerns regarding the product, installation, or warranty, please reach out to your sales representative.