

INSTALLATION PHOTO
Embossed SWICK® Natural Wall Coverings – DSSWK076

EMBOSSED SWICK® NATURAL WALL COVERINGS

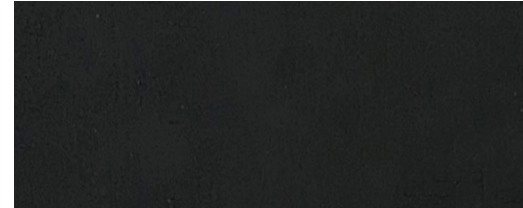
With an enhanced offering of crafted wall surfacing materials, **Embossed SWICK® Natural Wall Coverings** simulate concrete and aged patina sheet panels with seven new patterns in copper and authentic colorations. This ecological and decorative collection is made from stone powder, thus, 100% recyclable plus chlorine and plasticizer free. The rich layering and inviting textures will create an outstanding statement in any space!

SPECIFICATIONS

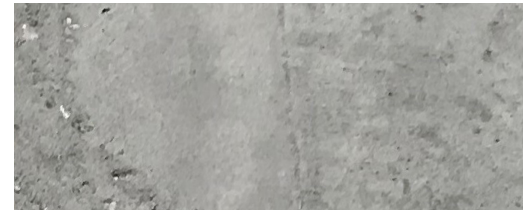
SIZE	39 5/16" x 118 3/32"
THICKNESS	Ranges from 1.5mm-4mm
CONSTRUCTION	Stone dust adhered to bonded fiberglass backing
FINISH	Natural
APPLICATION	Walls, Wood-based Materials, Architectural Millwork, Columns, Backsplashes and Visual Display, Merchandising Elements
ASI® ADVANTAGE	Recyclable; Plasticizer Free; Low VOC emissions; Class A Fire Rated upon request



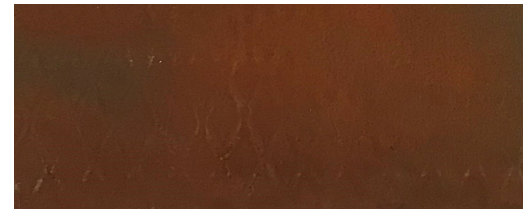
DSSWK080



DSSWK036



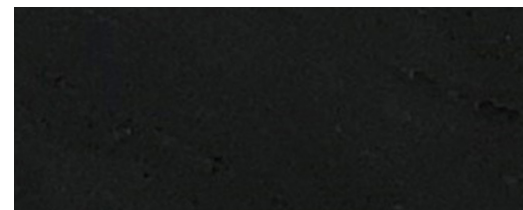
DSSWK076



DSSWK081



DSSWK085

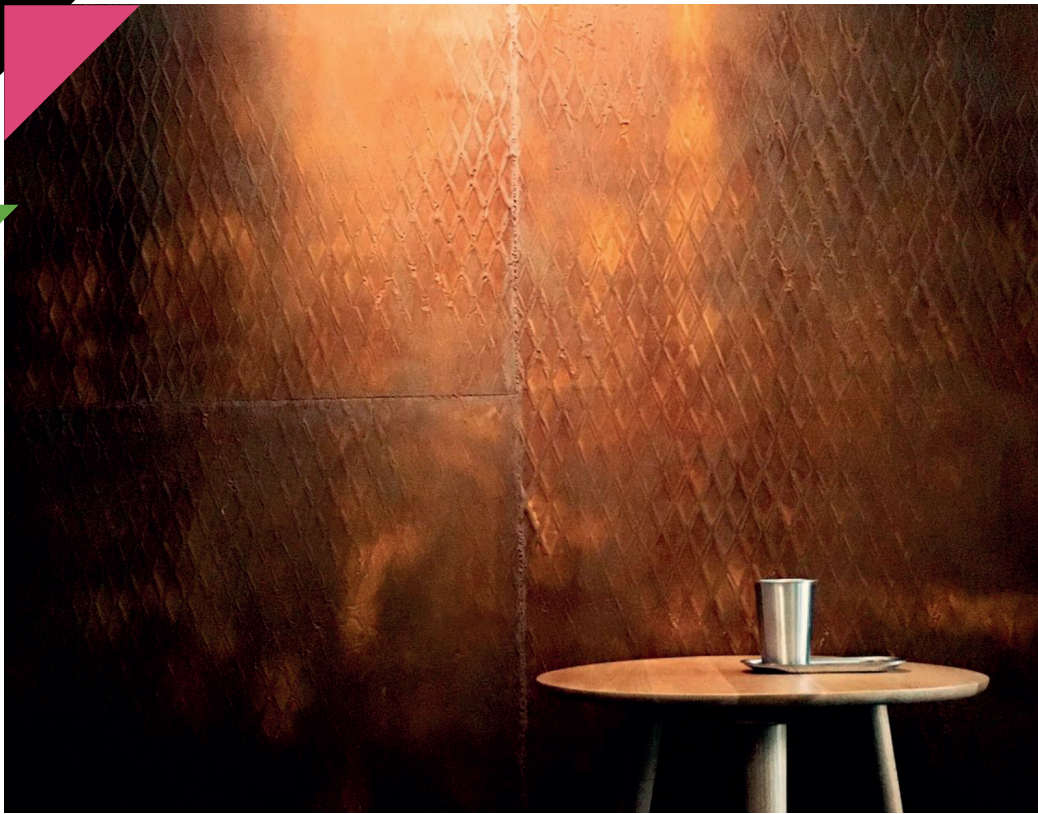


DSSWK086



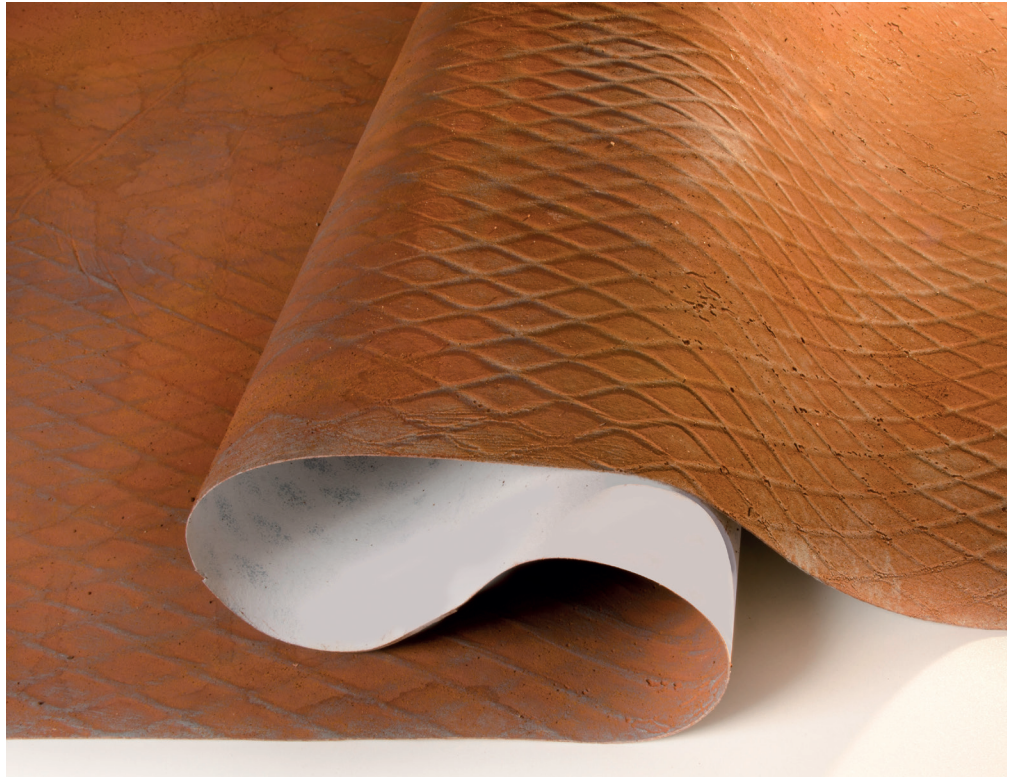
DSSWK087

*Please note that variations in color and texture may occur due to the nature of the material



INSTALLATION PHOTO

Embossed SWICK® Natural Wall Coverings – DSSWK081; DSSWK085



PRODUCT DETAILS

Embossed SWICK® Natural Wall Coverings – DSSWK080; Roll – DSSWK081

STORAGE: Storage is recommended in a dry area at ambient temperatures of minimum 50° F (10° C); long-term storage on rolls should be avoided.

NOTE: As the application and workmanship are outside of our control, the information provided above has no legal binding effect. The information can only be general recommendations. The working conditions beyond our control exclude any claim from this information. In case of doubt, we recommend that you conduct sufficient tests yourself.

INSTALLATION INSTRUCTIONS

TOOLS:



STEP 1: PREPARATION

Check Material/Color/Unroll

Test The Substrate: Before processing, check to ensure that the substrate is suitable for the intended application. The substrate must be dry, stable and dust-free, clean and smooth.

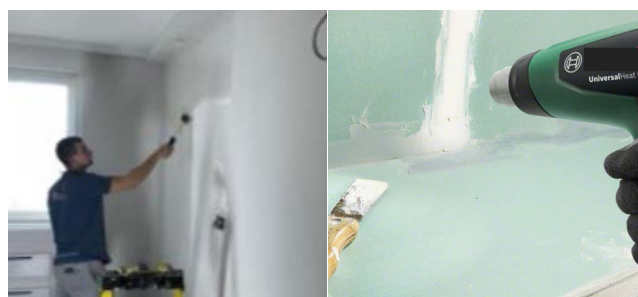
Tips: Prepare walls and use a primer if required to enable adhesive bond to the surface. Old layers that are to load bearing, wall covering and adhesive residue from previous wallpapering must be removed. Rough surfaces, holes and unevenness should be filled with a gypsum based filler.

Acclimatization: Prior to processing, the material should ideally be acclimatized at room temperature 24 hours before processing.

Processing temperature: We recommend that the material is processed at temperatures over 64.4° F (18° C). Minimum processing temperature 59° F (15° C)

Tips: In cold conditions it is possible to speed up your process by using a heat

gun. Use on the lowest power mode and not longer than 10 seconds on the same spot as the surface can be damaged when exposed to a strong heat source for a long time.

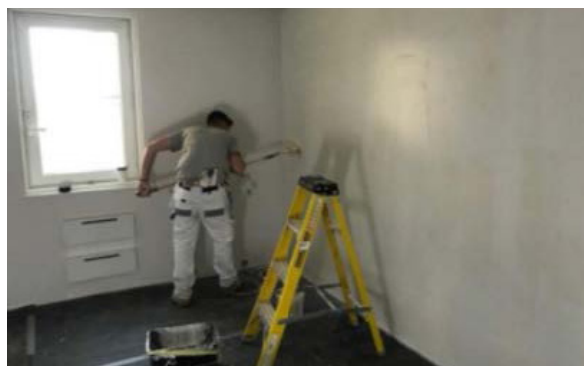


STEP 2: CUTTING

Plan room for roll application.

Layout: Think about windows/doors and how stone would be cast/cut i.e. no joints over heads, think about where you start the first roll so you don't end up with uneven wall/slabs.

Tools: The material can be cut easily using a cutter knife. On thicker surfaces, a heat gun will ease this process. The material when bonded on MDF can be processed using standard carbide tools.



STEP 3: BONDING

Adhesives: Trowelable FRP glue recommended.

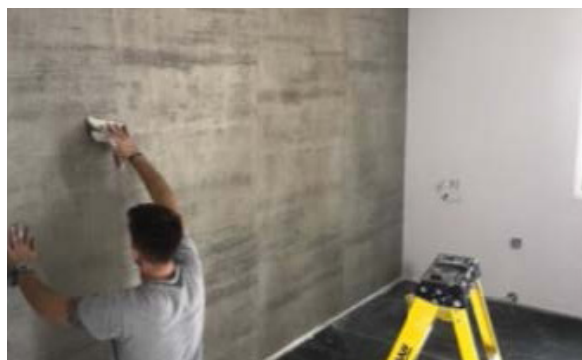
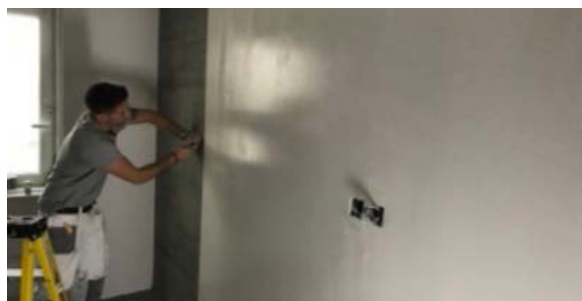
Bonding around 90 corners: Corners can be bonded with a miter finish and joint paste, or totally folded/bent material (only if using a contact adhesive). To avoid crack formations on the folded corner, the material should be heated using the heat gun on the lowest power mode and not longer than 10 seconds on the same spot as the surface can be damaged when exposed to a strong heat source for long time.



STEP 4: INSTALLING

- Hang roll from the top/let roll drop down the wall ensuring roll is fixed at the top.
- Apply pressure to surface with roller/wallpaper applicator
- Cut roll length at bottom using staley knife - ensure roll is stuck
- Sweep your hand over the surface or use a pressure roller to ensure and remove and air pockets. This check should be performed repeatedly to ensure that the full surface of the material is bonded.

Tips: Use a sponge when pressing to remove air pockets. Repeat process until walls are covered.



STEP 5: FILLING JOINTS

- Apply masking tape down the joints' 5mm gap.
- Apply joint paste using spatula.
- Peel off masking tape whilst paste is wet.
- Repeat over all joints/around edges.

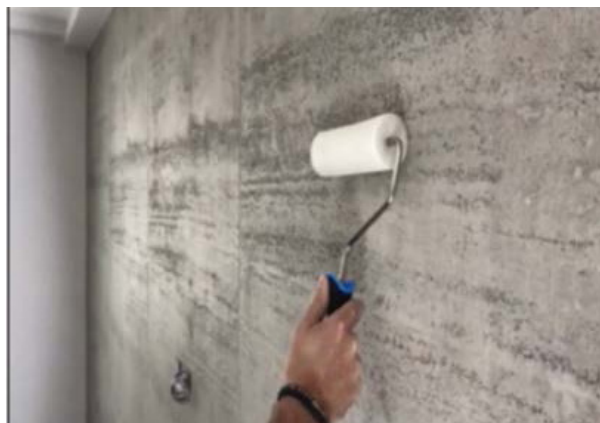


STEP 6: SCRATCHING/SANDING

Using a 240 grit foam pad the surface can be scratched so that the material is characterized and to reduce and raised areas.

STEP 7: SEALING

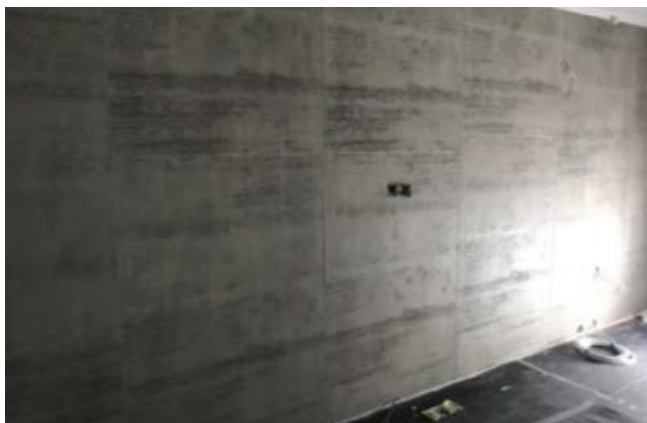
- In wet zones or heavy duty surroundings it is necessary to use a special PU sealer on the surface (supplied separately.)
- Use a roller/brush to apply sealer over all walls.
- Let it dry approximately 6 - 12 hours.



STEP 8: ADDITIONAL SURFACE SEALING/TREATMENTS

Plain colors: A water-based color wash can be used to harmonize the joints/roll colors bringing your own ideas and vision into the surface.

Rusts: This collection may contain iron/rust, a natural product. It will therefore have a design. A PVA/Water sealer spray can be used to increase surface protection, but please note color will change. Always test such surface protection products on a small area of the ASI product to check for color change before applying to the entire installation.



MAINTENANCE

Please contact sales@archsystems.com.

LIMITED WARRANTY

Architectural Systems warrants that, under normal use and service, the material and workmanship of its products shall conform to the standards set forth on the applicable technical data sheets of the respective products for a period of **one year from the date of sale to the first consumer purchaser**, subject to following conditions:

- a. The warranty shall cover only the specific standards of material and workmanship of the product as set forth in the applicable technical data sheets of the respective products and shall not cover the merchantability of the product or the fitness thereof for any purpose whatsoever.
- b. The warranty shall be for a period of one year only from the date of sale to the first consumer purchaser.
- c. Any resale, transfer, assignment or deviation of any nature whatsoever from the first/original installation of the product shall render this warranty void.
- d. This warranty shall be non-transferable and any resale or transfer of any kind whatsoever, of the product by the first consumer purchaser shall render this warranty void.
- e. This warranty shall not cover any damage or deviation from the standards set forth on the applicable technical data sheets of the respective product, in case such damage or deviation is caused by:
 - **accidents, abuse or misuse**
 - **exposure to extreme temperatures or to non-conductive natural or artificial environments**
 - **improper fabrication or installation; or improper maintenance, and Architectural Systems shall have the sole and absolute right to determine the reason for such damage or deviation.**
- f. This warranty shall be void, subject to other terms and conditions contained herein, upon nonproduction of the original warranty document, duly sealed and stamped on the date of purchase of the product by Architectural Systems or by any of its authorized dealers / distributors.
- g. Under no circumstances shall Architectural Systems be liable for any loss or damage arising from the purchase use or inability to use this product or for any special, indirect, incidental, or consequential damages and if the product does not perform as warranted, the first consumer purchaser's remedy shall be solely limited to repair or replacement of all or any part of the product which is defective, at the Architectural Systems sole discretion.
- h. These terms of warranty are non-amendable and may be modified or changed only by Architectural Systems and any assurance of modification or change of the terms of warranty which may be given to the First Consumer Purchaser by any fabricator, installer, dealer, distributor, agent or employee of Architectural Systems shall be without any authority to do the same and hence non-enforceable.
- i. In case of any disputes or differences which arise out of these warranty terms, the same shall be exclusively subject to the jurisdiction of the laws of the United States of America.
- j. These terms of warranty shall be deemed to have been accepted upon purchase of the product by the first consumer purchaser.