



INSTALLATION PHOTO
CHIZEL® Timber Textures – WPVEP555

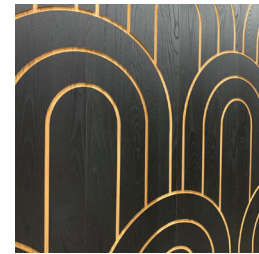
CHIZEL® TIMBER TEXTURES

A subtle alchemy of wall panels combining an aesthetic and efficient approach that refreshes your design view can be found in this collection. An expanded color offering and patterns for this routed, fumed ash wood veneer, along with an exposed MDF with a balanced backer now introduces a whitewash and black finish along with Fumed Ash, all available in 12" x 96" sizing. Quick ship and Class A Fire Rating on request makes this collection a transcendent surfacing option for community spaces.

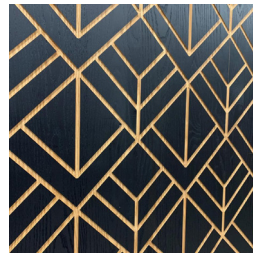
SPECIFICATIONS

SIZE	11.75" x 94.5"
THICKNESS	19mm
FINISH	UV Varnish, 10% Low Sheen
CONSTRUCTION	Wood veneer top layer with an MDF core and a balanced back
INSTALLATION	Glue and Nail
APPLICATION	Headboards, Walls, Architectural Millwork, Furniture and Fixture Components, Doors
ASI® ADVANTAGE	Class A Fire Rated, upon request.

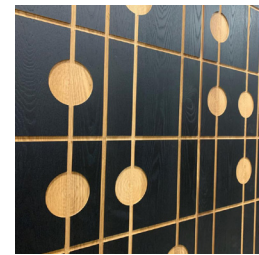
*Please note that variations in color and texture may occur due to the nature of the material



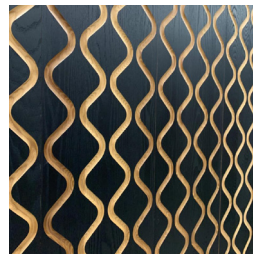
WPVEP552



WPVEP555



WPVEP558



WPVEP561



WPVEP553



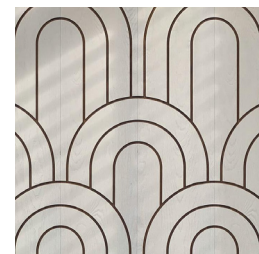
WPVEP556



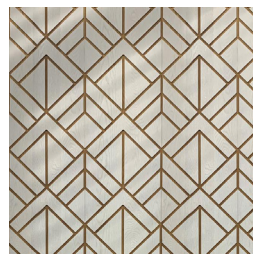
WPVEP559



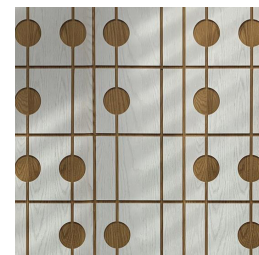
WPVEP562



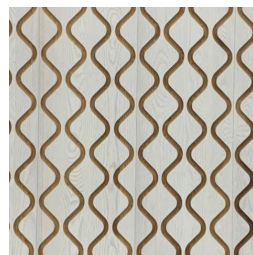
WPVEP551



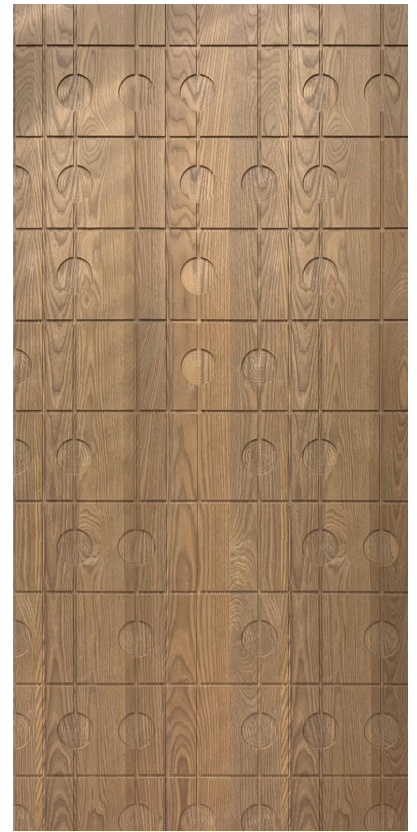
WPVEP554



WPVEP557

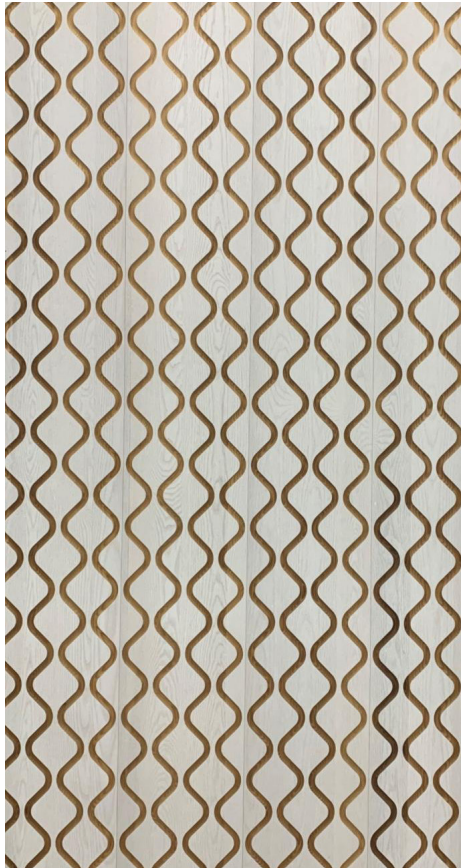


WPVEP560



INSTALLATION PHOTO

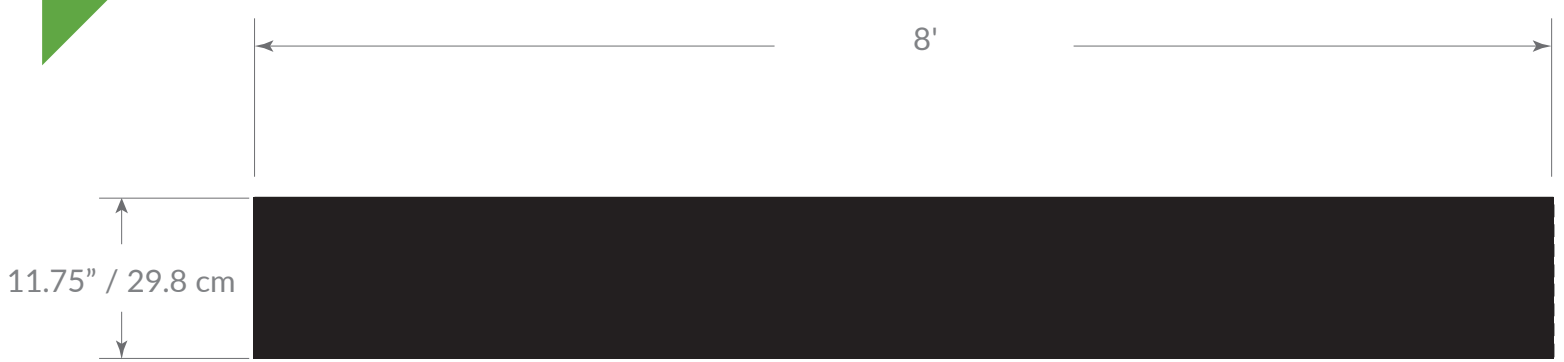
CHIZEL® Timber Textures – WPVEP551; WPVEP559



INSTALLATION PHOTO

CHIZEL® Timber Textures – WPVEP560; WPVEP556

TECHNICAL DATA



ASI | Architectural Systems, Inc. guarantees the conformity of its products when they are installed according to the installation instructions and are maintained in an environment where ambient humidity ranges between 35% and 55%: before, during and after installation. **LEAVE THE BOX IN THE ROOM WHERE IT IS TO BE INSTALLED FLAT ON THE FLOOR IN ITS ORIGINAL PACKAGING UNTIL INSTALLATION.**

PRECAUTIONS: Always wear work gloves and safety glasses when installing the product.

TOOLS:

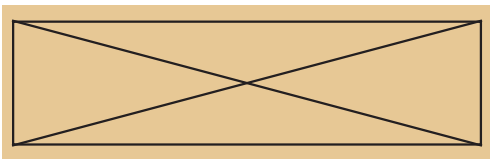
- Vertical adhesive through ASI
 - Spec ID# FLDTC025
- Caulking gun
- Miter saw
- Tablesaw
- Level
- Measuring tape
- Cutter
- Pneumatic finish hammer (#23 gauge finish nail)
- Stepladder

MAKE SURE YOUR KNIVES AND SAW-BLADES ARE IN PRIME CONDITION.

First, check the wall(s) is level from floor to ceiling and edge-to-edge. If not, adjust accordingly.

STEP 1:

A. On the back of panel, apply a line of vertical adhesive through ASI, **Spec ID# FLDTC025** in the form of a rectangle (1/2" (1.3 cm) from edges) and an X inside the rectangle. See Diagram below.



STEP 2:

Position the first panel in the lower left section of the wall.



NOTE: If wood pieces detaches from a wall panel, reposition using vertical adhesive through ASI, Spec ID# FLDTC025.

The wall panel needs to be glued and nailed for a successful install and to prevent future warping. Failure to comply with the installation instructions shall void the application of the warranty. This is a glue and nail installation. Do not install over material other than drywall and plywood.

STEP 3:

Nail panel in place with #23 gauge nails. Nail into the MDF near the base of the panel at an angle to prevent the nails from showing. NEVER NAIL INTO THE WOOD VENEER.

STEP 4: INSTALLATION OF SUBSEQUENT PANELS

- Repeat Step 1.
- Align and set the next panel against the prior panel ensuring the panel pattern repeats.
- Repeat Step 3.

STEP 5: END A ROW

- Carefully measure and cut a new panel such that it fits the allocated space while ensuring the panel pattern repeats.
- Repeat Step 1 on the cut panel.
- Align and set the cut panel against the prior panel in the row.
- Repeat Step 3.

STEP 8: START A NEW ROW

Use the remaining piece from the previous row or a new panel. If necessary, carefully measure and cut the panel to ensure the desired pattern is achieved. Repeat Steps 1 and 3.

STEP 9: LAST ROW

Cut the panels of the last row lengthwise to fit the available space.

MAINTENANCE

Clean-up recommendations: a regular dusting with a soft cloth or a feather duster.

NOTE: If wood pieces detaches from a wall panel, reposition using vertical adhesive through ASI, Spec ID# FLDTC025.

The wall panel needs to be glued and nailed for a successful install and to prevent future warping. Failure to comply with the installation instructions shall void the application of the warranty. This is a glue and nail installation. Do not install over material other than drywall and plywood.

PLEASE READ BEFORE THE INSTALLATION

Environmental conditions such as exposure to light and fluctuation in temperature and humidity, will greatly affect product performance from the initial installation throughout its life. Refer to our installation instructions and warranty for proper steps to a successful install and ensure the lifelong performance of your Architectural Systems, Inc. wall. Failure to follow the installation instructions shall void this warranty.

Architectural Systems, Inc. guarantees the conformity of its products when they are installed according to the installation instructions and are maintained in an environment where ambient humidity ranges from 35% to 55% before, during and after the installation.

Solid wood and wood veneer are susceptible to show movement when ambient humidity level is below 35% or above 55% such as gapping between pieces and possible cupping.

Architectural Systems, Inc. can not be held responsible for site conditions and products that are not installed per our instructions.

Architectural Systems, Inc. guarantees the wall panels against manufacturing defects. If, upon opening a box a panel is defective or fails to meet quality standard, the consumer may return the panel to the original dealer for a replacement.

This product is flammable and its use near an important heating source is not recommended. Please check the latest construction regulations in your area. In addition, the wood will lose its humidity which can cause delamination.


Storage: Do not store in a garage, basement, or other locations where the wood would be exposed to the effects of uncontrolled humidity and environment conditions.

5 - Year Limited Structural Warranty

Architectural Systems, Inc. guarantees the wall panel, in their original condition, shall be free from manufacturing defects for the period of 5 years from the date of the original purchase.

3 - Year Finish Limited Warranty

Architectural Systems, Inc. guarantees the surface finish on the wall panel under normal conditions won't wear through for the period of 3 years from the date of the original purchase.



Given the nature of wood, it is possible that the wall panels may vary in colour variations from one panel to the next, from one sample to the next, and from one production lot to the next. We recommend that you lay out the panels on the wall based on your personal colour preferences. Such variations may not be claimed under warranty.

To avoid dramatic variation between pieces, it is recommended that the installation be completed from the same lot.

Ceiling applications are not covered by this warranty.

This warranty does not cover ANY other costs, such as, but not limited to, installation, transport, punitive damages, labor etc.

This warranty does not cover cupping and/or delaminating due to excessive moisture or humidity.

This warranty does not cover damages caused by or related to improper storage or installation of the wall panels.

This warranty does not cover manufacturing defects in the wall panels which have been installed, and which could have been discovered by the installer prior the installation.

By installing this product, you confirm that you have consulted the installation instructions and acknowledge your approval of the product and its warranty.

What Architectural Systems, Inc. Will Do

Architectural Systems, Inc. will repair or replace any defective wall panels or issue credit for the defective portion. However, you are responsible for the costs associated with shipping and handling of replacements, as well as any additional expenses related to the defective panels, including labor for removal and installation, and any extra materials required. Please note that, due to the natural variations in the product, replacements may not match the original order in terms of color, tone, or other inherent wood characteristics.

Should you have any questions or concerns regarding the product, installation, or warranty, please reach out to your sales representative.